

Gone to Swan

stories and photos from my wanderings around our planet



How N+D What Where Who Why

Travel fave – Cartise trench

Posted by: [Waheeda](#) | April 7, 2010



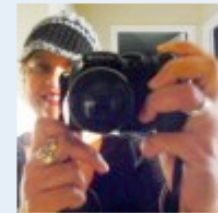
I'm a fan of the trench coat – it adds a professional layer to any outfit while still looking stylish. Cartise decided to kick it up a notch with this very feminine version.

A satin poly-cotton coat with an embellishment of fabric roses along the collar and self-tie belt to show off the waist is oh so pretty and very much a girlie choice.

Yet it still adds a protective layer for spring or fall temperatures and with its pearl metallic colour, nodding to the metallic trend without becoming a slave to fashion.

Available in sizes small to extra large, this satin trench with a pair of sunglasses will make an unbeatable outfit when you arrive at your destination.

For more information: [Cartise](#)



Hello and welcome to Gone to Swan. I'll be sharing my view of our planet through articles, photos and video.

Come with me as I travel around the mainland, head overseas and spend time on islands.

I'll show what I learn, write about new products I like, and post photos and videos of places I've seen.